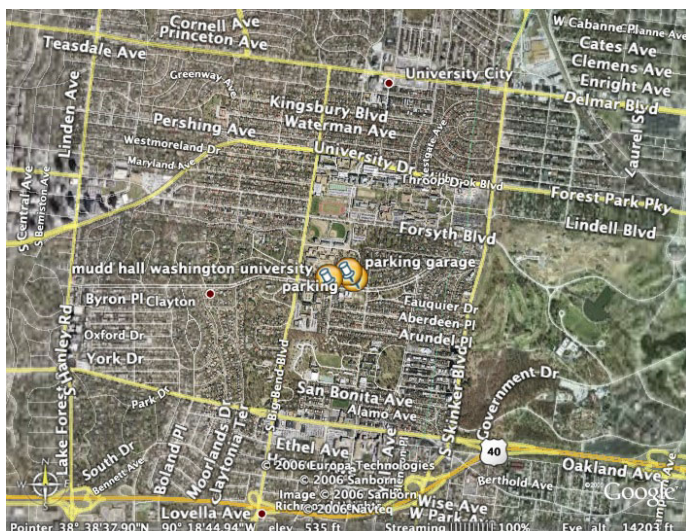
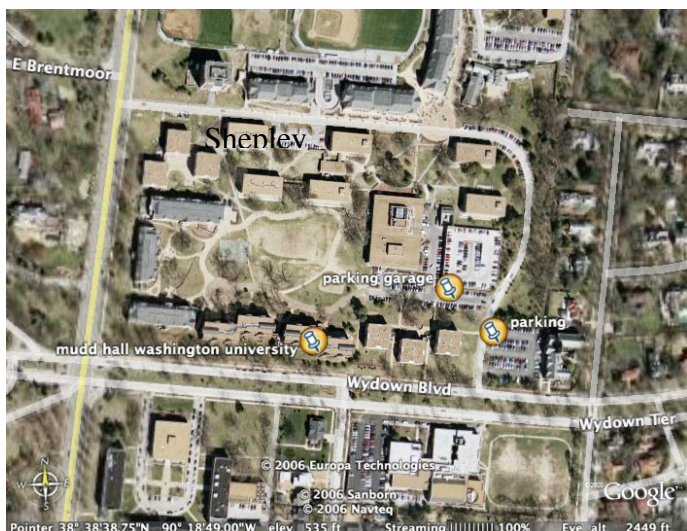


## Directions to MSRAL 2006 convention



**Registration will take place in Mudd Hall, pinmarked above. Parking will be either in the small parking lot to the East or the parking garage. You will be notified when you register for the conference.**

**From hwy 70 west of St. Louis:**  
 Hwy 70 to 270 South  
 East on Hwy I-64/US 40  
 Exit at McCausland (Exit 33-D past Bellevue) and turn left (North). McCausland becomes Skinker at Clayton Road, keep going straight. Continue 0.8 mile to Forsyth Stoplight (next stoplight past Wydown).  
 Left on Forsyth for 0.6 mile  
 Left on Wallace Drive  
 0.2 mile to stopsign.  
 Turn right at stopsign to parking garage on right  
 Mudd Hall is across the quad from the garage

**From Hwy 44 or 55:**  
 Hwy 44 or 55 to 270 North  
 East on Hwy I-64/US 40  
 Exit at McCausland (Exit 33-D past Bellevue) and turn left (North). McCausland becomes Skinker at Clayton Road, keep going straight. Continue 0.8 mile to Forsyth Stoplight (next stoplight past Wydown).  
 Left on Forsyth for 0.6 mile  
 Left on Wallace Drive  
 0.2 mile to stopsign.  
 Turn right at stopsign to parking garage on right  
 Mudd Hall is across the quad from the garage  
**Caution:** Highway 44 has construction between Springfield and St. Louis. Expect possible delays and add time for your travel.

**From areas East of St. Louis**  
 Cross the Mississippi River at Saint Louis. ( That bridge handles I-70, I-55, and I-64 traffic.)  
 Stay toward center and continue straight (I-70, I-55, and I-44 exit to the right).  
 You are now on I-64 westbound  
 Take Clayton exit, 34B (next one after Forest Park/Hampton) to the stoplight at the top of the exit ramp hill.  
 The intersection is Clayton and Skinker. Turn right.  
 Continue 0.8 mile to Forsyth Stoplight (next stoplight past Wydown).  
 Left on Forsyth for 0.6 mile  
 Left on Wallace Drive  
 0.2 mile to stopsign.  
 Turn right at stopsign to parking garage on right  
 Mudd Hall is across the quad from the garage

**Google map for the picture above. Use this link to print larger maps or street only maps.**  
<http://www.google.com/maphp?hl=en&q=&ll=38.643489,-90.313936&spn=0.005799,0.007446&t=h&om=1>

**Washington University Map of campus. Mudd Hall is building number 99**  
<http://www.wustl.edu/tour/hilltop/index.html>

**Caution: Highway 44 has construction between Springfield and St. Louis. Expect possible delays and add time for your travel.**